

MATRIX *portable digital logging system*

MATRIX Portable Digital Logging System is a proven, ultra-lightweight package feature weather-resistant combined instrument electronics and winch in a single 25 Kg small foot print unit. A dual-purpose tripod and accessories are shipped with every system. Add your own PC or an MSI pre-loaded PC/printer combination and MSI downhole probes to complete the system. Each unit is delivered with and emergency hand crank, integral precision hardened steel depth-measuring wheel, optical encoder, and LED depth and telemetry indicator display. The unit can be spooled with either 200 meters of 3.17mm dia. (0.125"), or 305 meters of 2.54 mm dia. (0.1") geophysical logging armored cable.



Matrix with portable winch
(The winch length of the picture is 300 meter)



40GRP-1000 gamma-SP-SPR Resistivity combo probe is ideal for slimline, one-pass, hydrogeological studies, lithology work, uranium exploration, and general borehole formation data. The totally digital probe combination measures 16, 64inch (0.4, 1.6 meter) normal resistivity, single point resistance, self-potential, and natural gamma. This combo probe operates with the new MATRIX Ver. 10.5 digital logger. The normal resistivity measurements, single point resistance, and self-potential measurements are designed for surveying open (uncased) fluid filled boreholes. Gamma works in any borehole environment



Terra Corporation

1593-1 Tsutsumine, Gyoda, Saitama 361-0035, Japan
Tel: +81-(0)48-553-3033 Fax: +81-(0)48-553-3047
E-mail: terrajp@cpost.plala.or.jp

Technical specifications

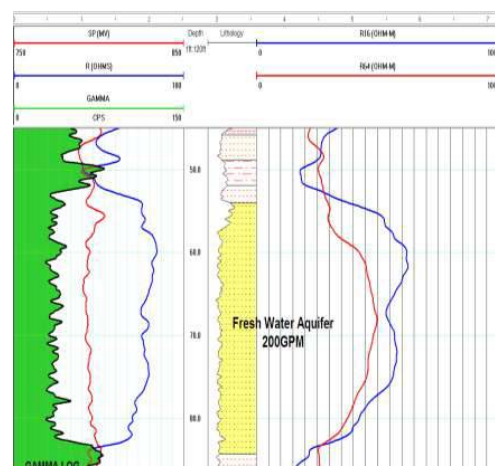
Matrix console

Dimension (W x L x H)	20 x 33 x 10 cm
Weight	5 kg
Input Voltage	90 – 240 VAC, 50 – 60 Hz inverter compatible
Tool Power	Up to 200 V / 300 mA
Cable Connectors	18 Pin Mil-C-26482 (single connector for depth, tension and wireline)
PC Connection	High speed USB
Operating System	Windows 2000, NT4, XP, VISTA, 7
Logging Cable	Standard single, four, seven conductor and coax
Logging Speed	e.g. ABI 40 @ 3mm, 144 pts/trn : 2.5 m/min
Tools / Telemetry	ALT, MSI, Geovista, Robertson V106, Century, analog tools (up to 4 pulse channels)
Upgradeability	User upgradable firmware



40 GRP-1000 gamma-SP-SPR Resistivity combo probe

Length	221 cm
Diameter	40 mm
Weight	8.8 Kg
Operating Temperature	0 to 70 degree
Storage Temperature	-40 to 125 degree
Maximum Pressure	2000 psi (13.8 Pa)
Range Norm. Resis.	0 to 10,000 Ohm-m
Measuring interval	16 inch and 64 inch
Normal Resistivity Accuracy	1 %
Normal Resistivity Resolution	0.02 %
Range SPR Measurement	0 to 10,000 ohms
Single Point Resistance Accuracy	1 %
Single Point Resistance Resolution	0.02 %
Self Potential Measurement Range	-1,500 to 1,500 mVDC
Self Potential Measurement Accuracy	1 %
Self Potential Measurement Resolution	0.04 %
Gamma Range	0 – 100,000 CPS/API
Gamma Accuracy	1 %
Gamma Resolution	0.02 %



Sample Log from 40GRP-1000 in one logging pass.



Terra corporation

Office

1593-1 Tsutsumine, Gyoda, Saitama, Japan
Tel 048-553-3033 Fax 048-553-3047
E-mail: terrajp@cpost.plala.or.jp

Head office

3-15-40 Akamidai, Konosu, Saitama, Japan
Tel 048-596-3147 Fax 048-593-3255
URL: www.terrajp.co.jp